

BIOCLEAN CLEARVIEW Autoclavable Goggles BCAH

About

BioClean Clearview Autoclavable Panoramic Goggles have a toughened, anti-scratch, anti-fog lens providing excellent optical clarity even after multiple autoclave cycles. Constructed in super-soft, lightweight silicone rubber for user comfort and prolonged use, they can be worn over eye-glasses, and feature an indirect ventilation system to reduce the risk of contamination entering the controlled environment.

Specifications

MATERIAL:

Silicone rubber frame, toughened polycarbonate lens, latex-free silicone head band with polypropylene hooks

COLOUR:

Translucent white frame and strap

CLASSIFICATION:

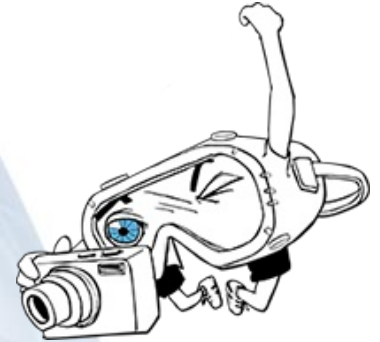
No Classification

COMPATIBILITY:

ISO Class 4 & EU GMP Grade A

Features

- Toughened anti-scratch, anti-fog lens
- Super-soft frame
- Indirect ventilation system
- Non-linting latex-free head band
- Tested to withstand 40 autoclave cycles of 30 minutes duration at 121°C/250°F (under laboratory conditions)
- Anti-fog performance remaining for up to 25 cycles with no signs of degradation (under laboratory conditions)



Lens Gogglestrong® represents
BioClean's range of GMP
compatible Cleanroom goggles

ANTI-FOG LENS

OPTICALLY CORRECT LENS

INDIRECT VENTILATION SYSTEM

Quality Standards

- Manufactured in a facility holding ISO 9001:2015
- Processed in an NEBB certified ISO Class 4 cleanroom environment

STERILIZATION:

Supplied non-sterile. To be autoclaved at 121°C/250°F for 30 minutes.

Shelf Life & Storage

Five (5) years from date of manufacture. Store in a dry, cool place (<40°C) away from direct sunlight and fluorescent light.

Physical Properties

Total Weight (\pm 2g)	106g
Lens Thickness (\pm 0.3mm)	1mm
Bridge Width (\pm 0.5mm)	50mm
Bridge Height (\pm 0.5mm)	20mm
Overall Width (hinge to hinge)(\pm 3mm)	180mm
Overall Height (\pm 3mm)	92mm

Explanation of Markings

REQUIRED MARKINGS	MARKINGS ON FRAME	MEANING
Manufacturer's Identification Mark	BioClean	BioClean™

TO ORDER

Re-order code

BCAH
BCAH-SL
BCAH-SS

Size

Goggle
Replacement Lens
Replacement Strap

Packing

Goggle (BCAH):

One piece per sealed PE bag (to be removed prior to autoclaving); 12 bags per inner box; five boxes per lined carton (60 pieces)

Replacement Lens (BCAH-SL):

One piece per sealed PE bag; 10 bags per inner box; 10 boxes per lined carton (100 pieces)

Replacement Strap (BCAH-SS):

25 pieces per sealed PE bag; two bags per inner box; 10 boxes per lined carton (500 pieces)

For additional information visit us at www.bioclean.com, or call us at +44 1638 663338

Nitritex Ltd

Minton Enterprise Park
Oaks Drive
Newmarket, Suffolk
CB8 7YY
United Kingdom

BCAH/1901/PDS38

The Ansell logo consists of the word "Ansell" in a bold, blue, sans-serif font. A green swoosh underline is positioned beneath the letters "n", "s", and "e".

Neither this document nor any other statement made herein by or on behalf of Ansell should be construed as a warranty of merchantability or that any Ansell product is fit for a particular purpose. Ansell assumes no responsibility for the suitability or adequacy of an end user's selection of goggles for a specific application.

Ansell, ® and TM are trademarks owned by Ansell Limited or one of its affiliates. © 2012 – 2018 Ansell Limited. All Rights Reserved.